



WILLIAM-GREEN
REAL ESTATE

Williamsburg and Greenpoint

Presents

319 Wythe Ave, Brooklyn NY 11249

Prime Retail



Location, location, location. Located on Wythe Ave between South 2nd Street and South 3rd Street. One of the most vibrant places in the neighborhood. Retail space consists of 900 sq. ft. on the ground floor plus 400 sq. ft. on the second floor with 500 sq. ft. private terrace.

Rent: **\$20,000 per month**

Michal Kuras williamgreenre@gmail.com P: 646.284.2026

The neighbors



Rivian electric truck showroom at 360 Wythe Avenue



VanMoof Electric Bicycles 326 Wythe Ave



Unagi Electric Scooters 324 Wythe Ave



Janes Motorcycle 396 Wythe Ave

The neighbors



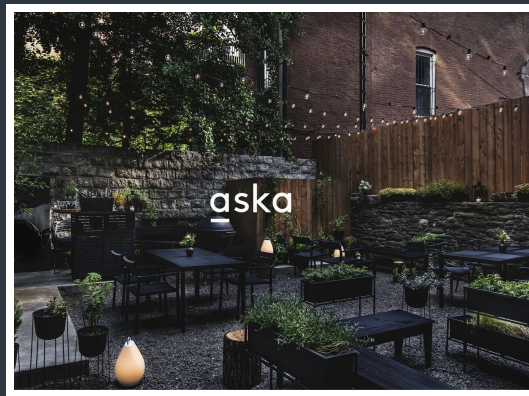
Sundays in Brooklyn 348 Wythe Avenue



Tacocina Domino Park



Freehold 45 South 3rd Street



Aska 47 South 5th Street



12 Chairs Wythe Avenue

Attractions and future projects



Domino Park Kent Avenue Brooklyn, 11249

<https://www.dominopark.com/in-the-park>



Domino Development proposed plans

Transportation



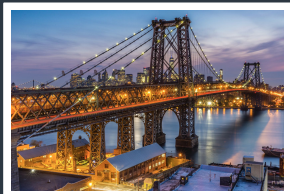
L train Bedford Avenue stop - 10 Blocks - 10 min.



J M Z trains Broadway Street stop - 8 Blocks - 8 min.



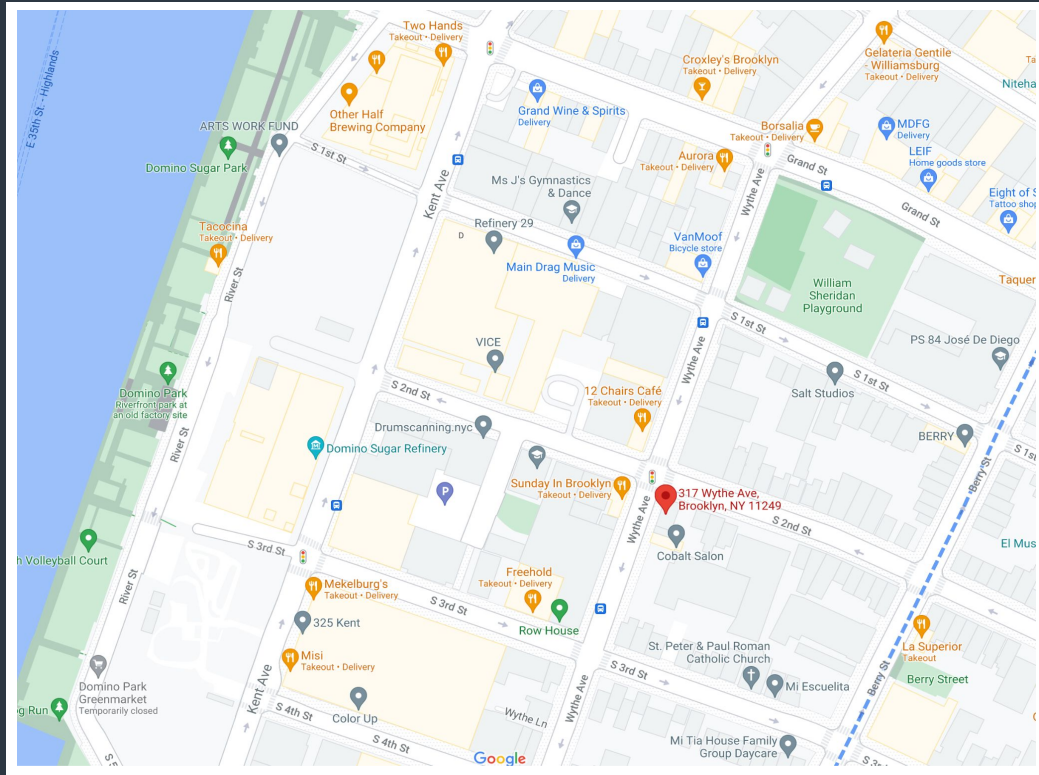
North 7th Street Ferry - 9 Blocks - 9 min.



Williamsburg Bridge - 5 Blocks - 5 min.

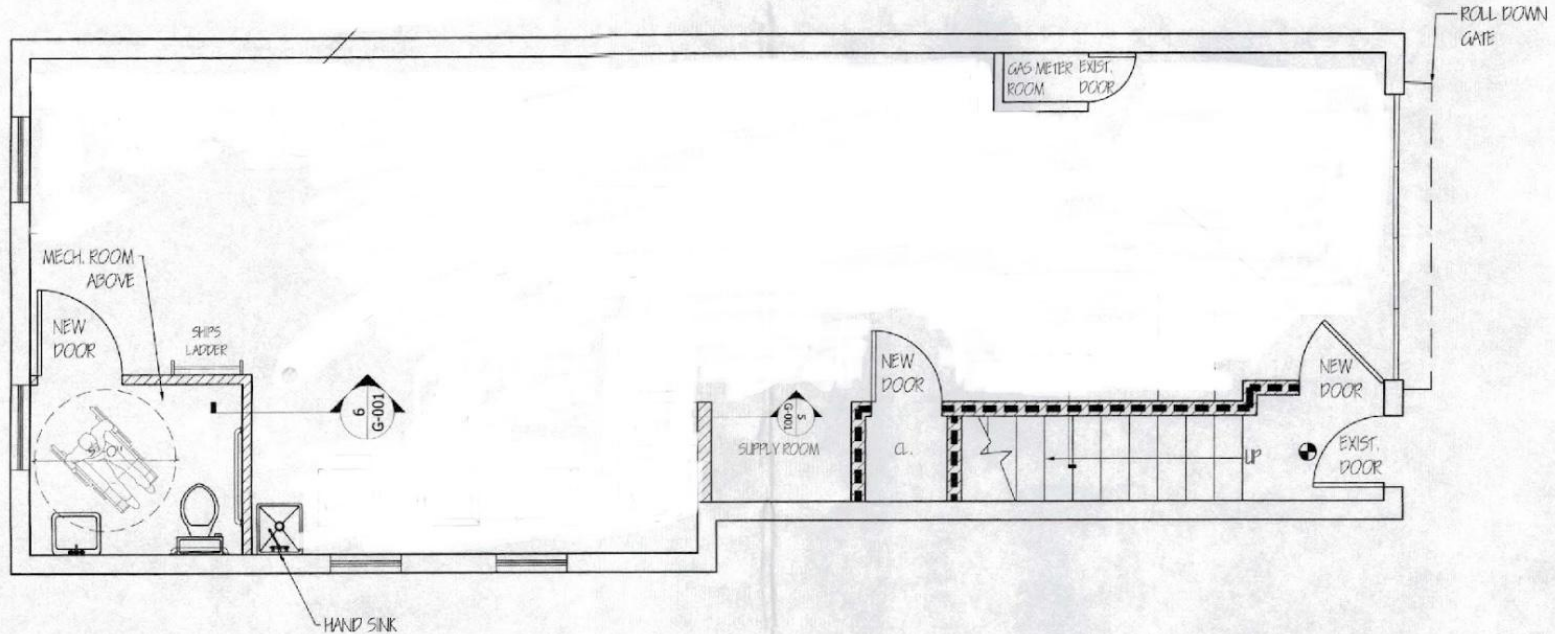
Location

317 Wythe Avenue Brooklyn N.Y. 11249



Floor plan 1st Floor

319 Wythe Avenue Brooklyn N.Y. 11249

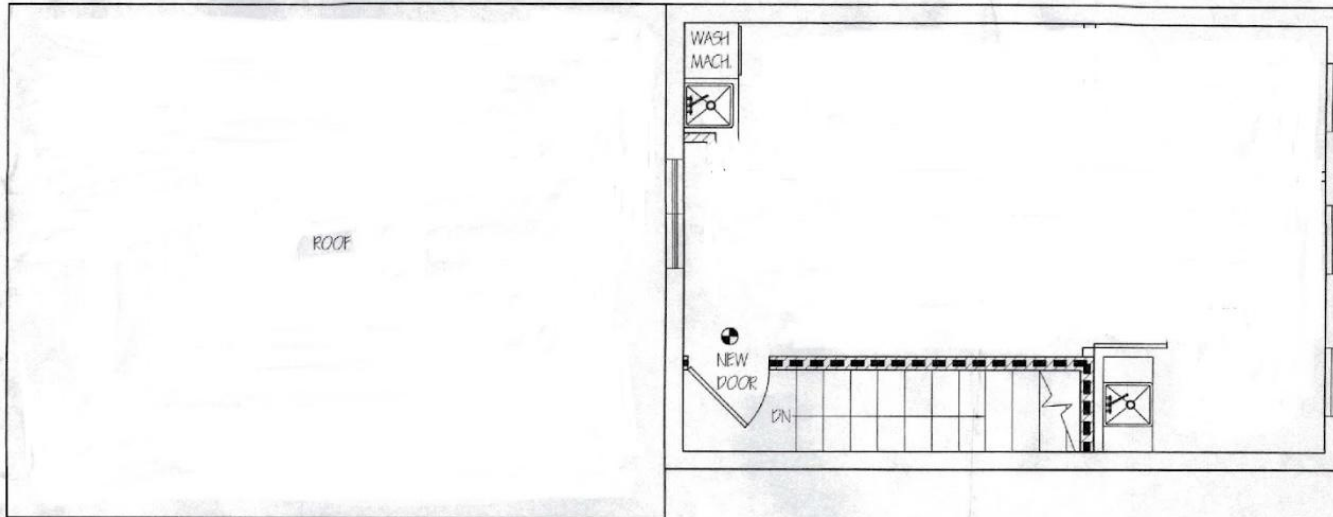


1 FIRST FLOOR PLAN

Scale: 1/4"=1'-0"

Floor plan 2nd Floor

319 Wythe Avenue Brooklyn N.Y. 11249



2

SECOND FLOOR PLAN

Scale: 1/4"=1'-0"